

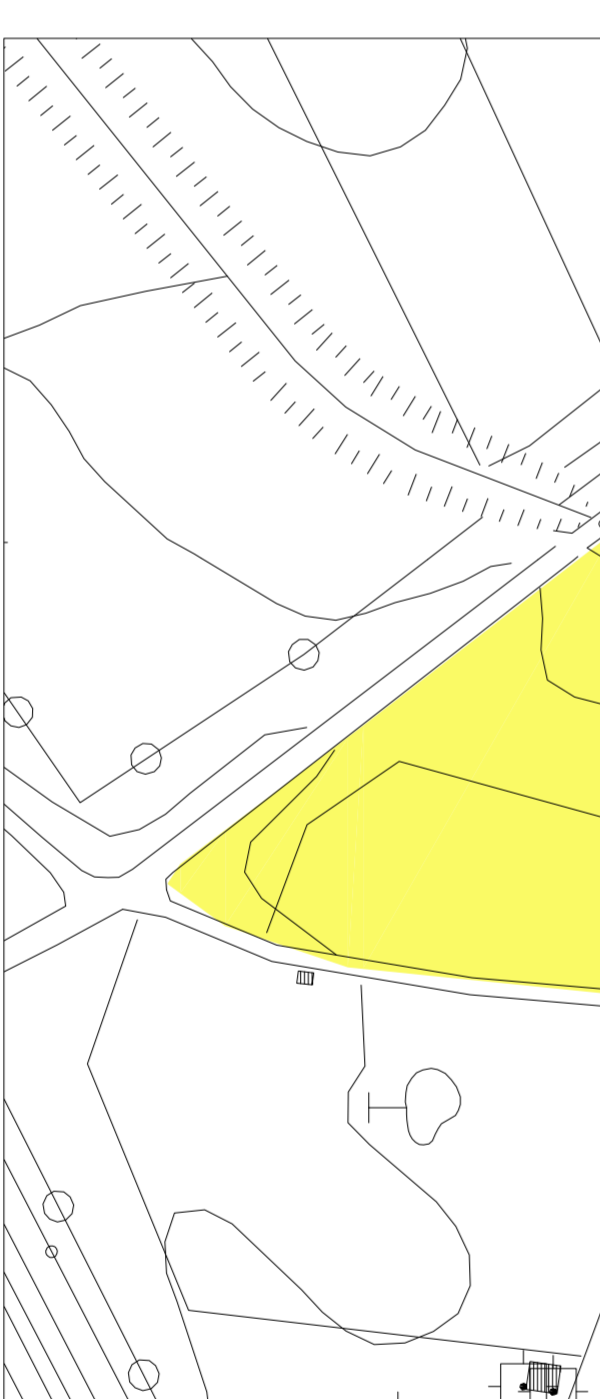
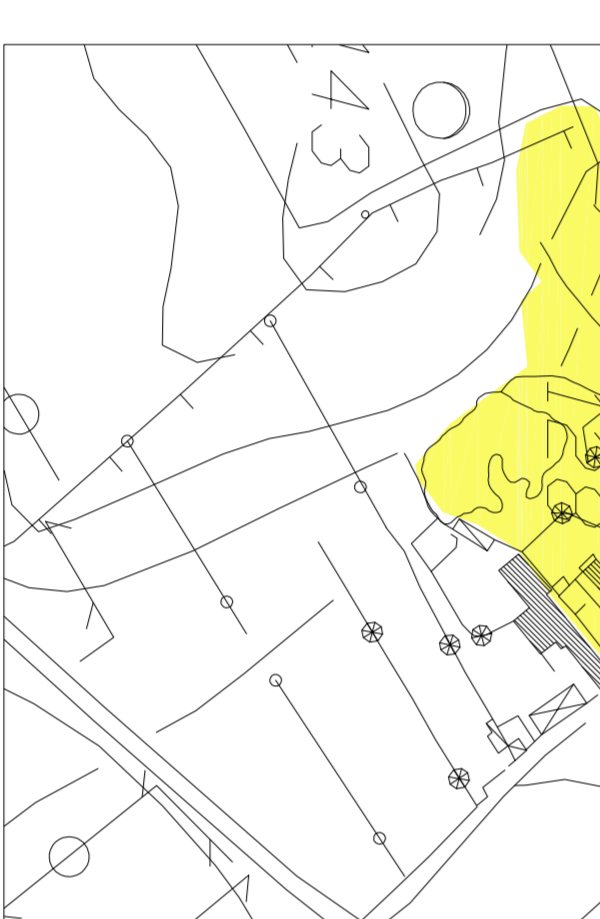
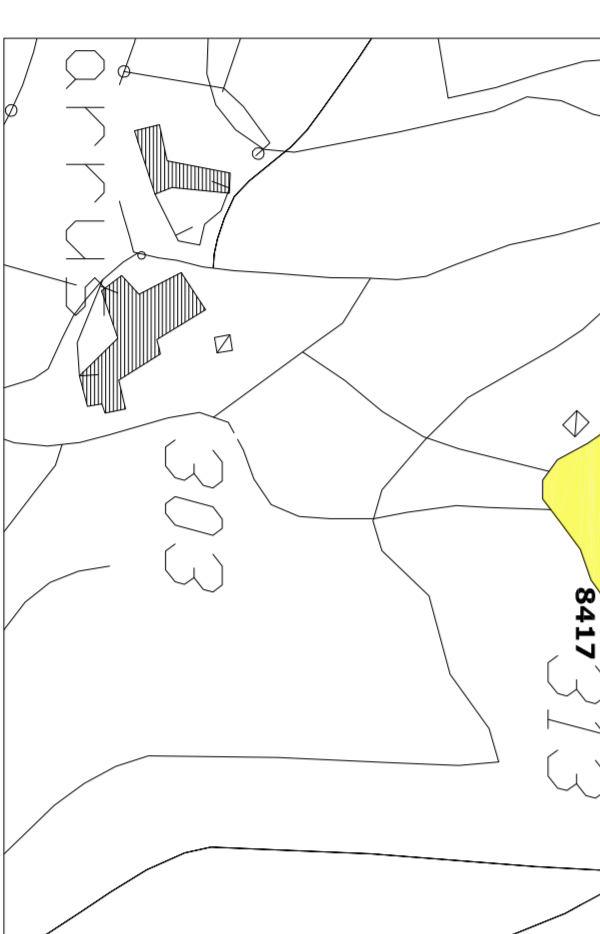
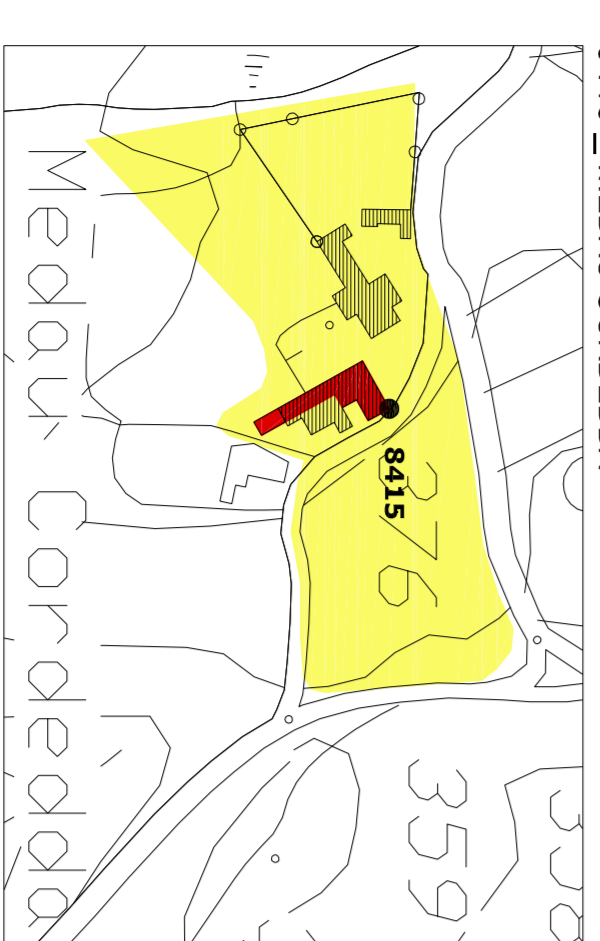
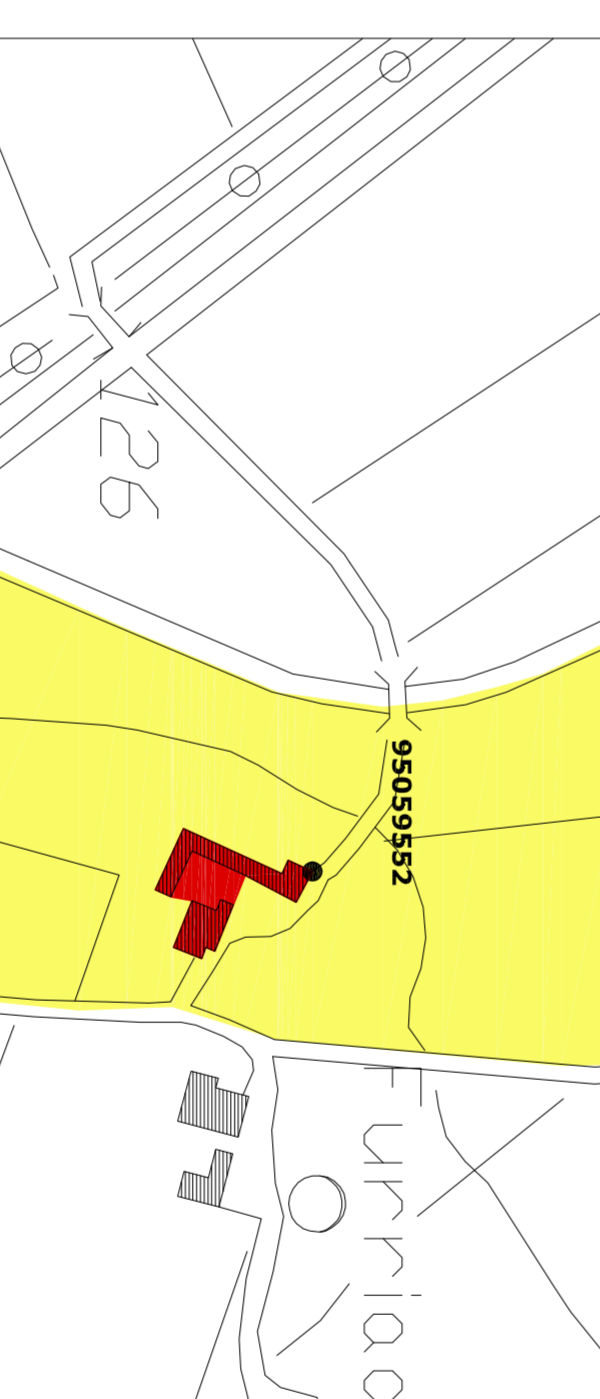
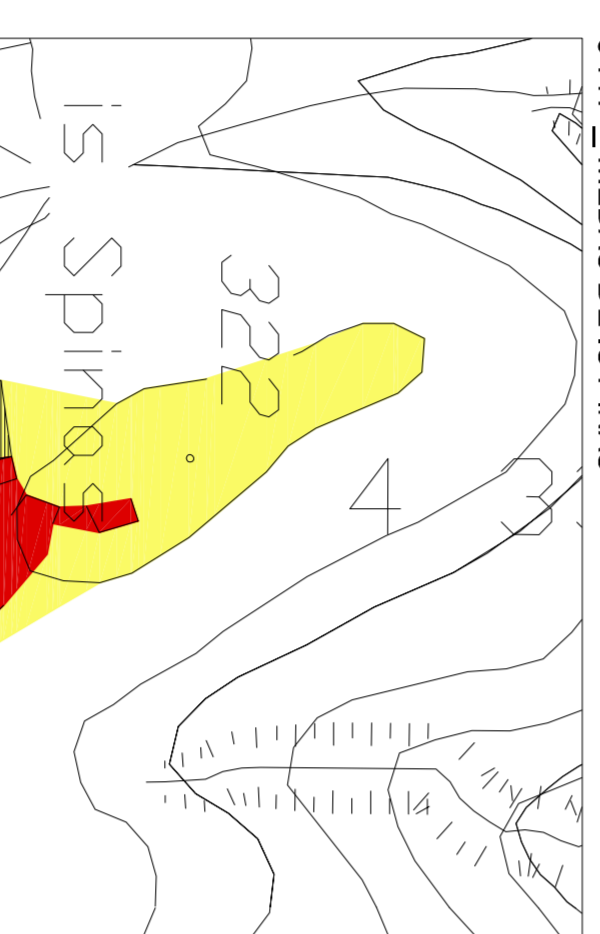
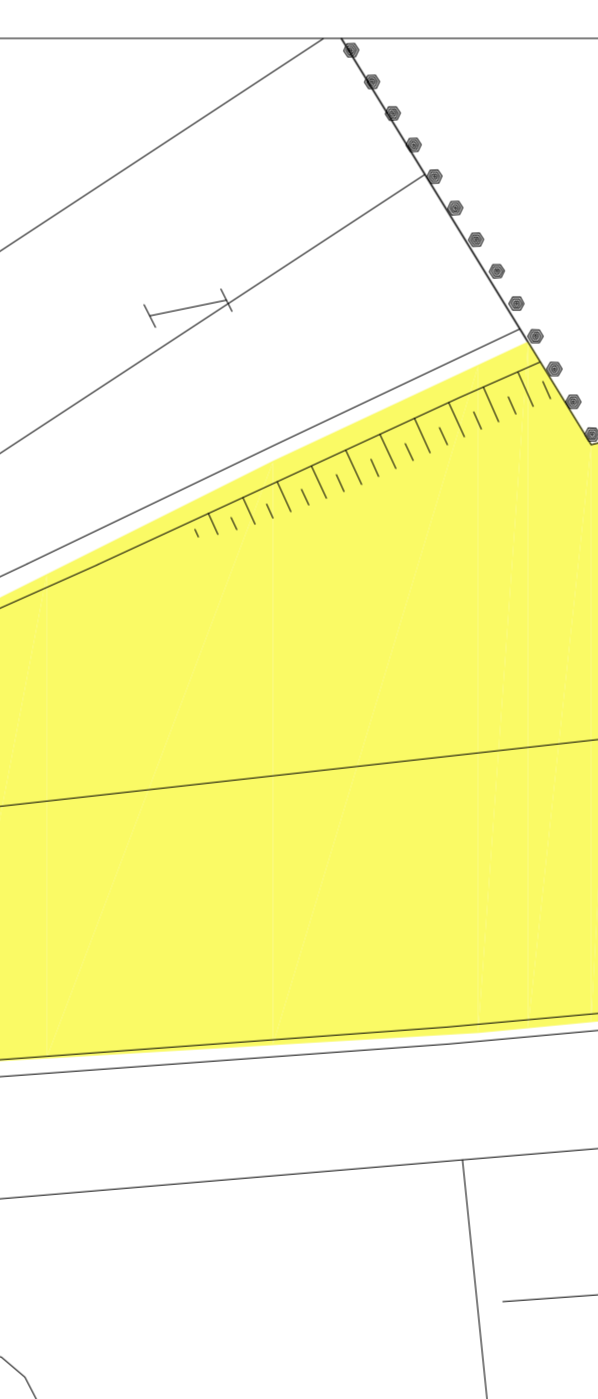
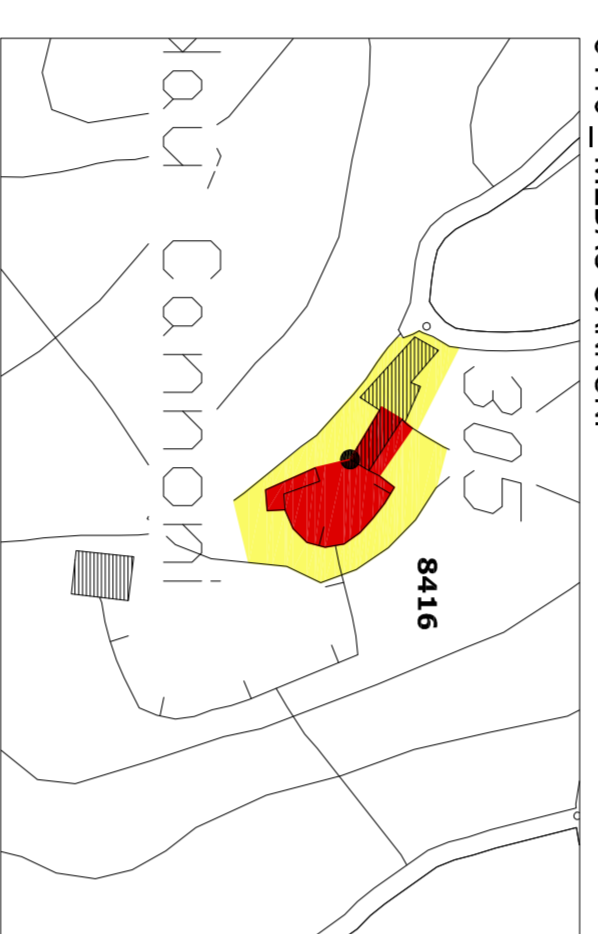
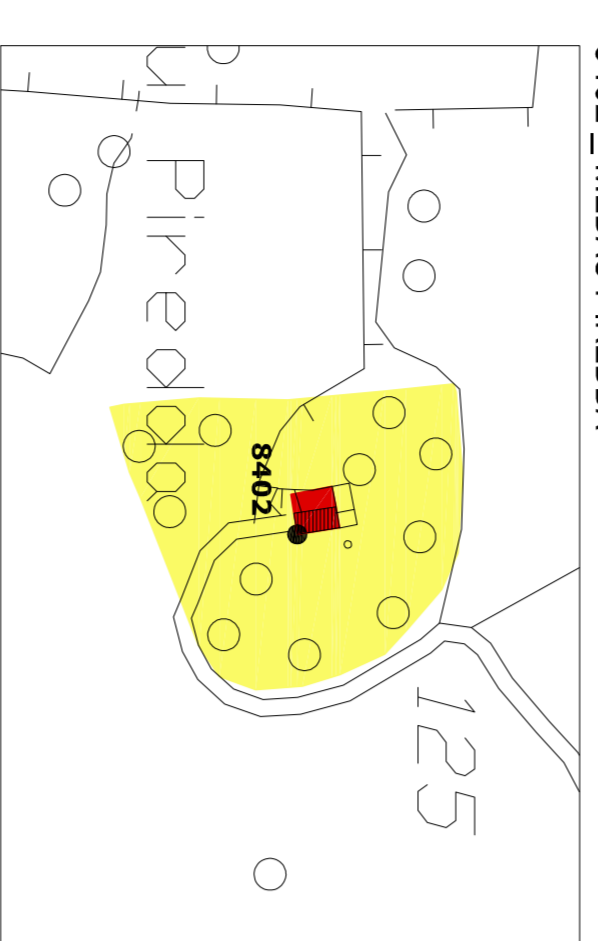
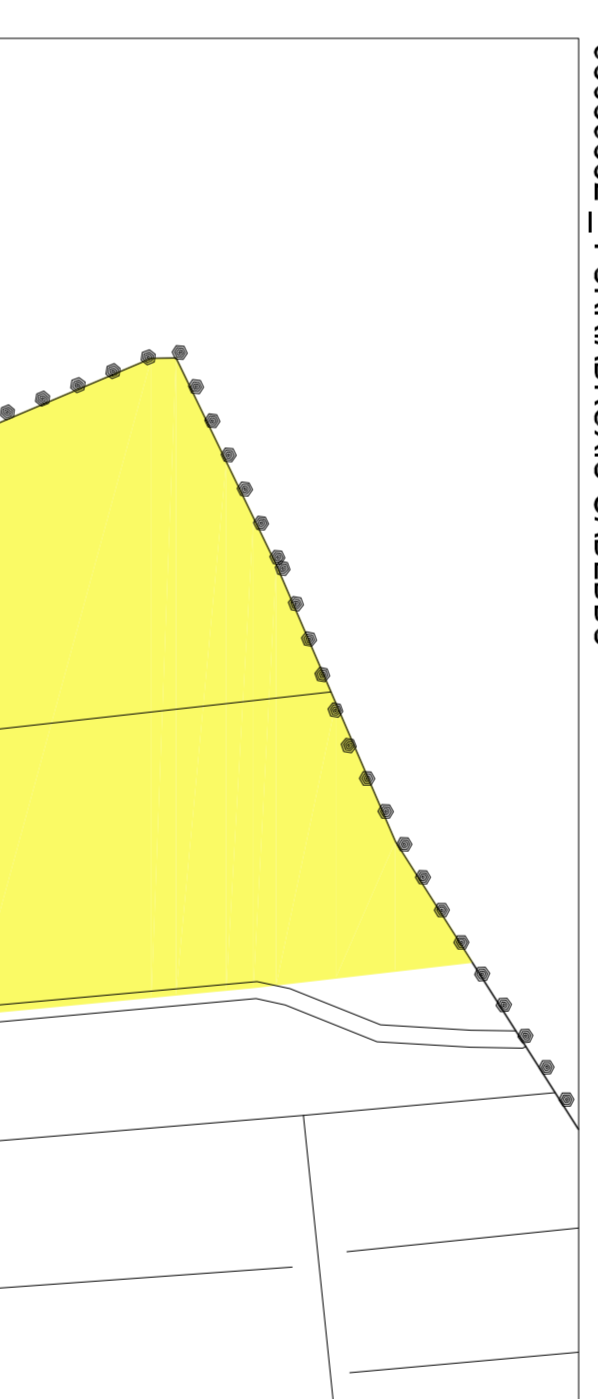
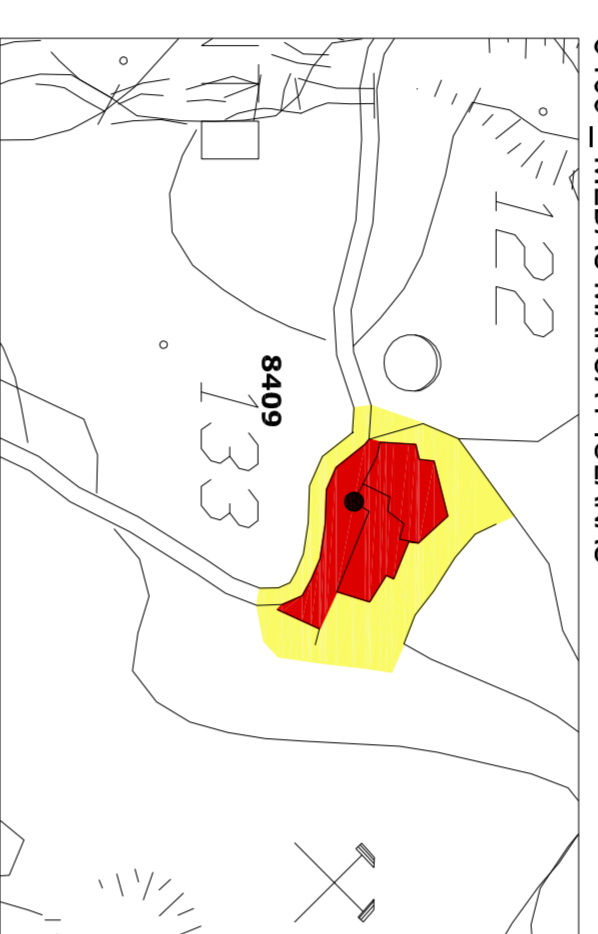
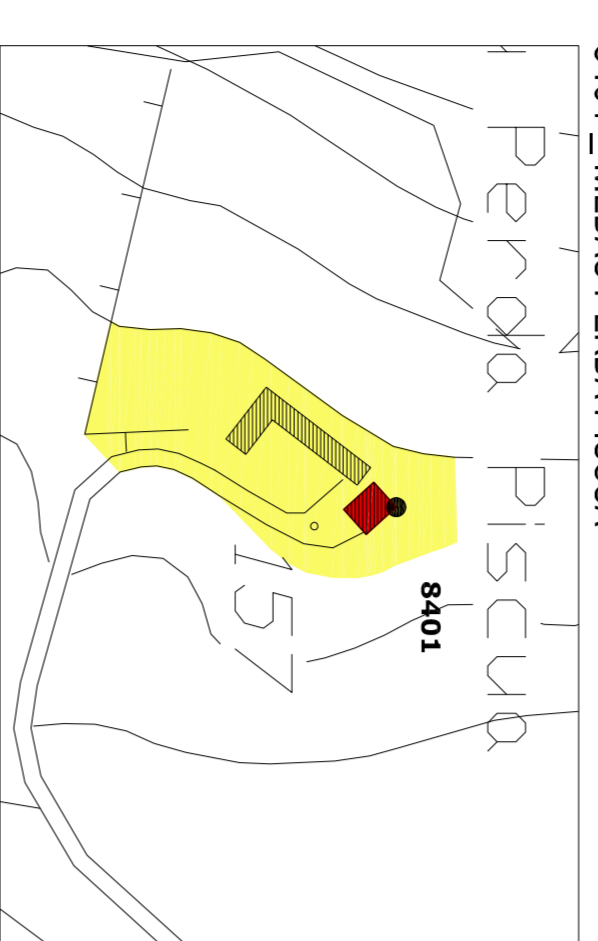
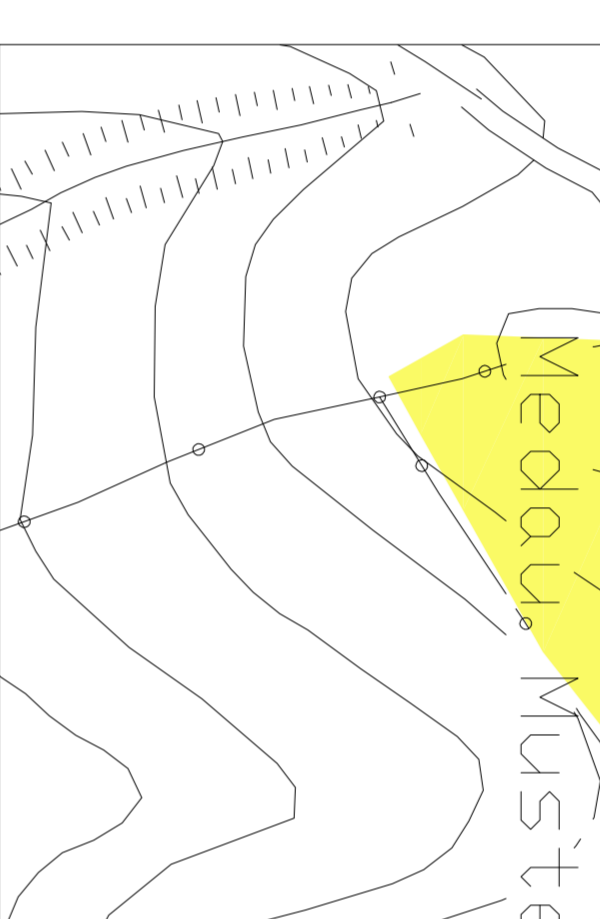
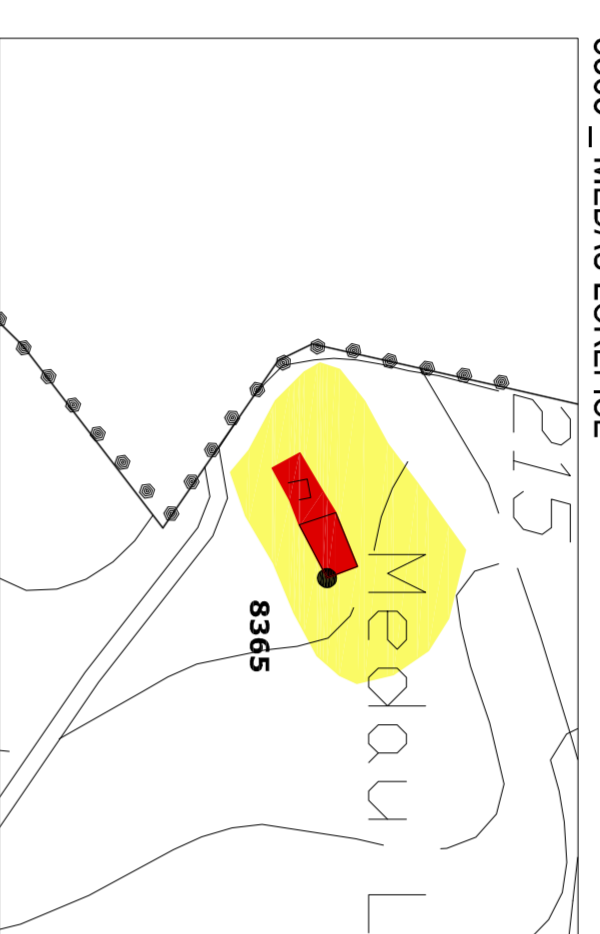
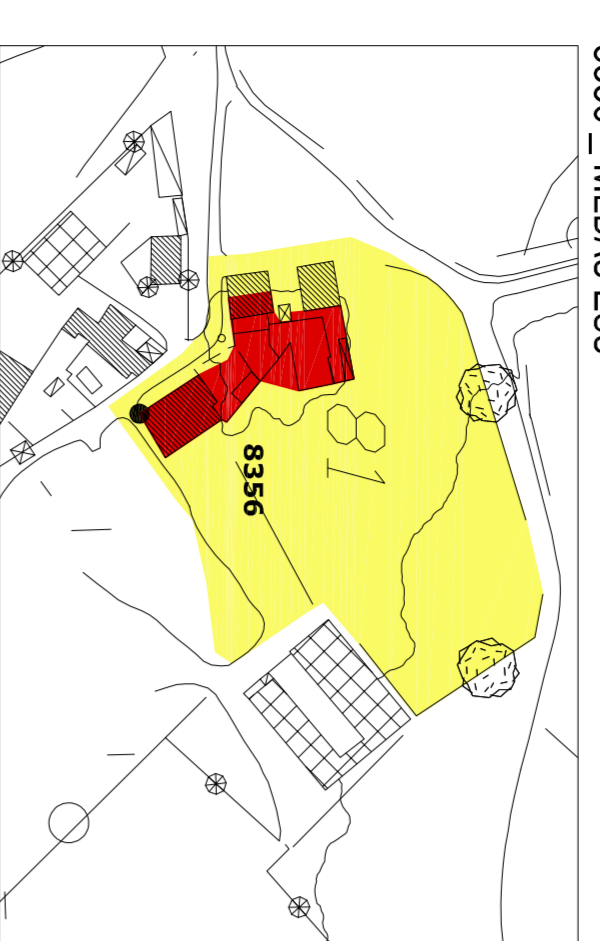
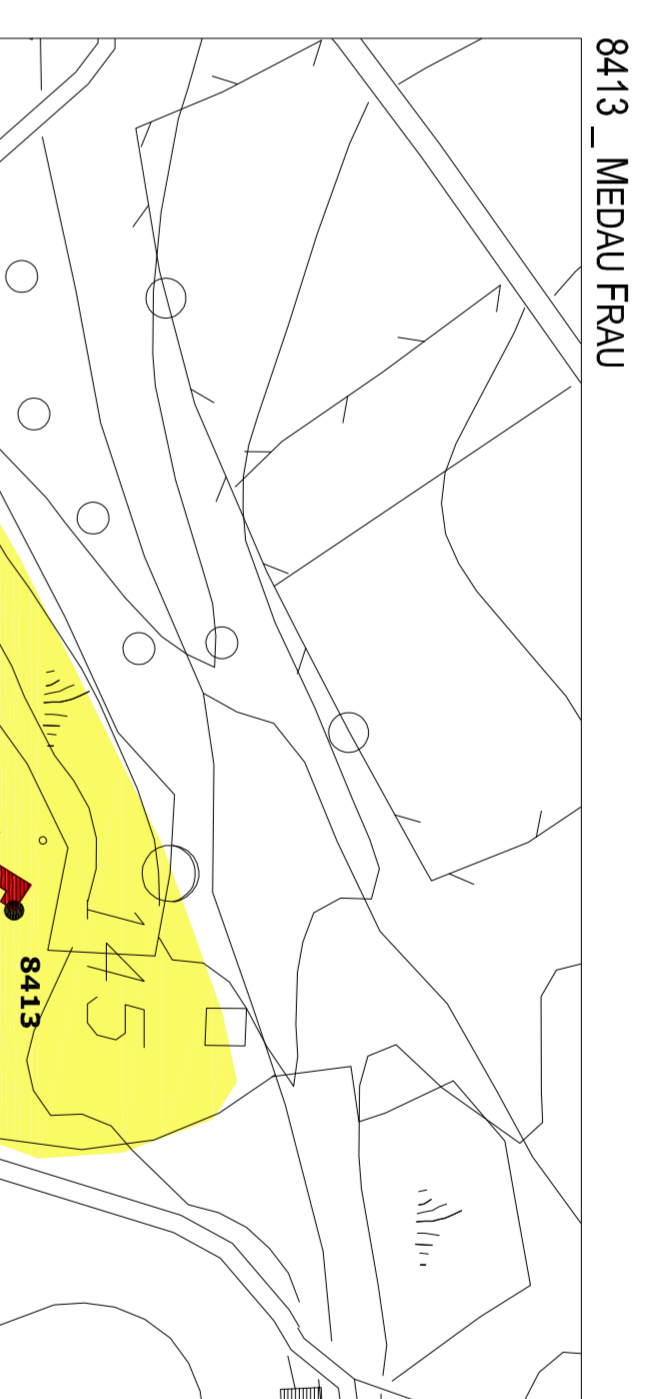
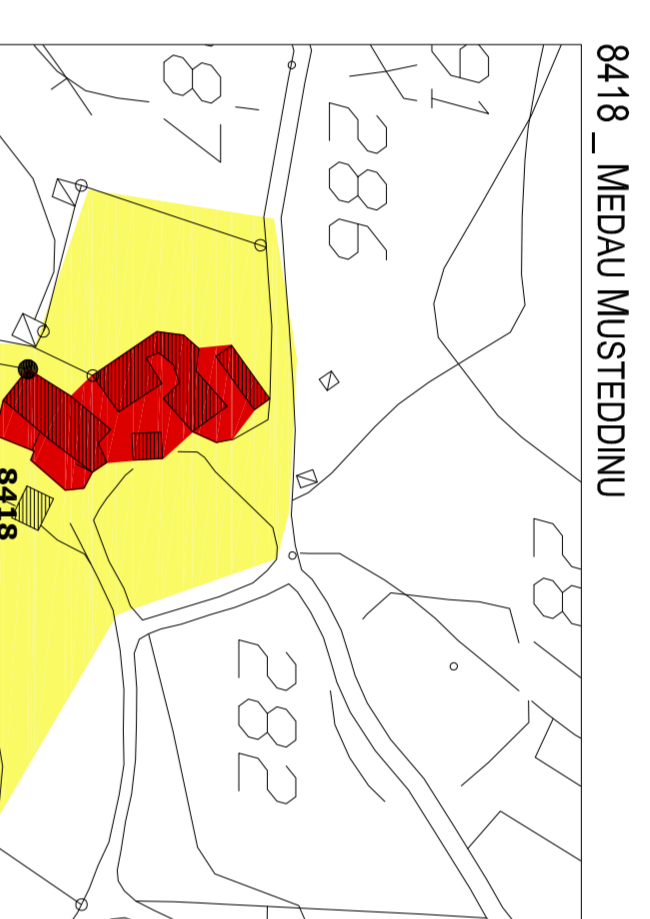
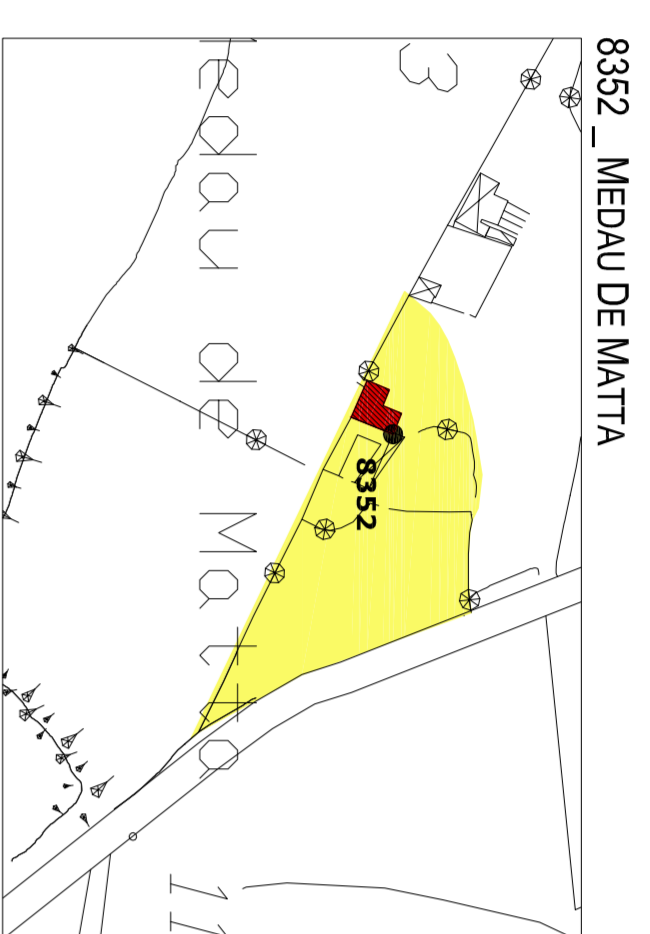
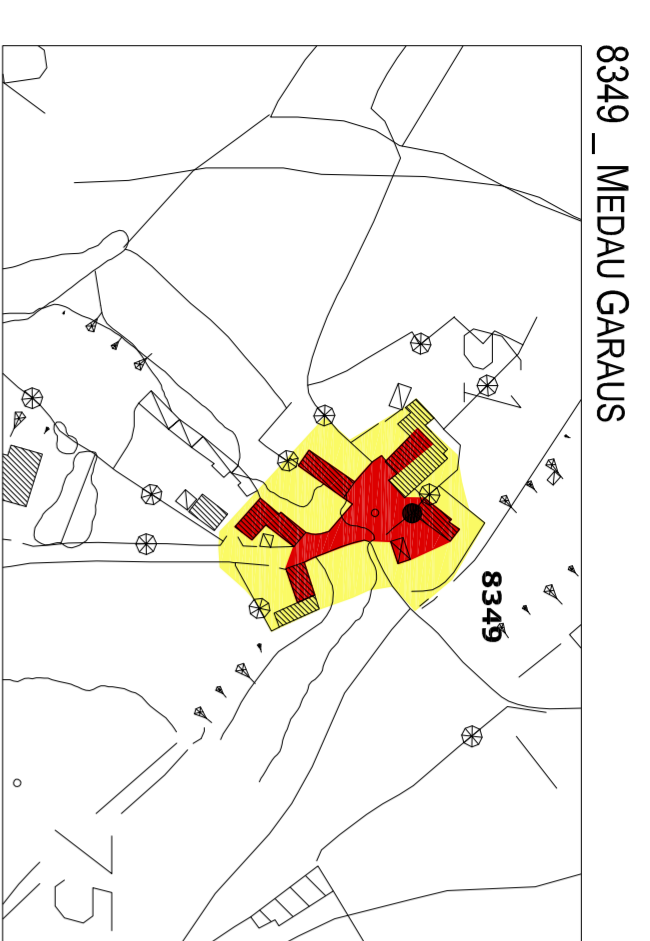


Tipologia	Descrizione Categoria	Colore
Perimetro Tipo 1	Perimetro a tutela integrale	
Perimetro Tipo 2	Perimetro a tutela condizionata	



**COMUNE DI CARBONIA**

**P.U.C.**  
**PIANO URBANISTICO COMUNALE**  
**IN ADEGUAMENTO AL**  
**PIANO PAESAGGISTICO REGIONALE**

Ufficio Tecnico Comunale - Area Urbanistica, Territorio e Ambiente  
 Coordinamento generale:  
 Ing. Gianpiero Poddada  
 Ing. Enrico Ponzica  
 Collaboratori:  
 Geom. Giorgio Ait  
 Ing. Erika Daga  
 Ing. Maria Grazia Mannari  
 Geom. Mariacristina Perra (elaborazioni CAD)

Comitato di settore:  
 Presidente: Ing. Salvatore Chirchi  
 Membri: Ing. Adriano Vanni (Dimensionamento ed Anziani di Paese) / Dott. Agr. Gaetano Cipolla (Agronomia e Pedologia) / Dott. Giuseppe Fenu (Analisi della popolazione) / Dott. Geol. Lorenzo Orrelli (Geologia) / Dott.ssa Carla Perra (Archeologia) / Arch. Elena Piredda (Beni Paesaggistici Archeologici) / Ing. Verdiana Anedda (Beni Paesaggistici Insediativi) / Ing. Sergio Barzoda (Beni Paesaggistici Insediativi) / Ing. Valerio Pini (Elaborazione GIS) / Dott. Geol. Alessio Mureddu (P.A.I.) / Dott. Geol. Franco Orrelli (P.A.I.) / Ing. Nicola Todde (P.A.I.)

Tecnico:  
 Ing. Salvatore Chirchi  
 Assessore:  
 Giuseppe Casali

**ALLEGATO 1 \_ TAVOLA 5g**

**ASSETTO STORICO CULTURALE**  
**BENI PAESAGGISTICI**  
 Individuazione Perimetri di Tutela Integrale e Perimetri di Tutela Condizionata

scala:  
 1:2.000

data:  
 Settembre 2010

prodotto:  
 formato:  
 DWG