

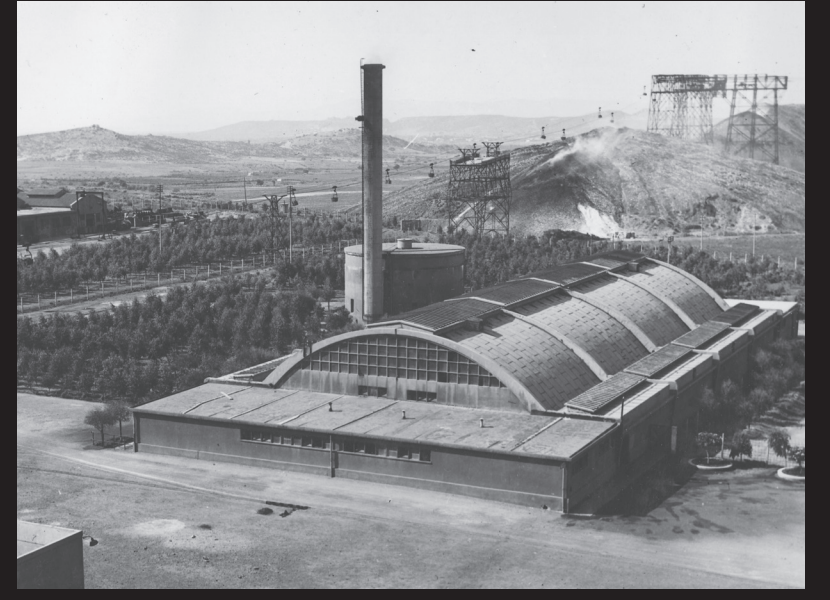
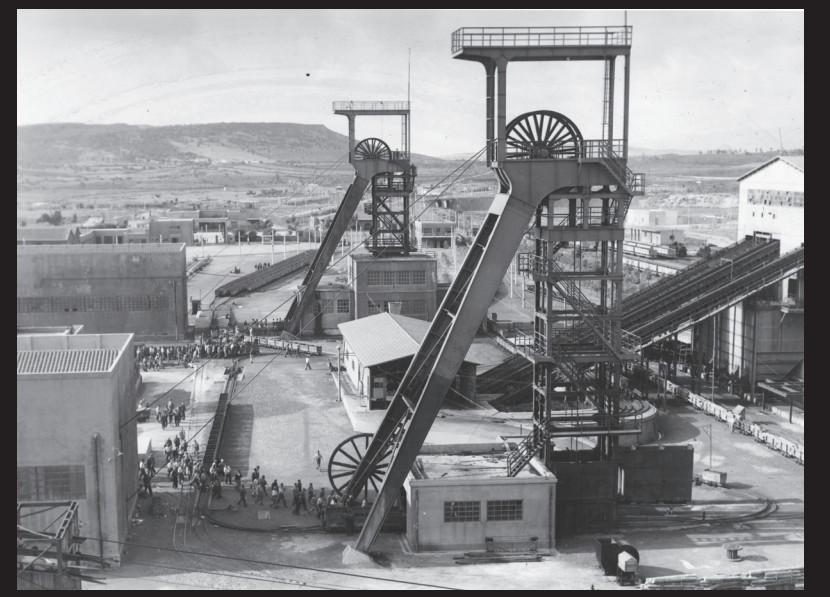
CREATION OF A RESEARCH FACILITY AND CULTURAL CENTER IN THE GREAT SERBARIU MINE

The Great Serbariu Mine was Italy's most important coal mine. It has been reovered to house research facilities and cultural activity in its vast spaces, creating new interactions between science and technology, art and culture.



- 1. BOILER ROOM - entry to CICC Museum
- 2. LAMPISTERIA - Lamp room
CICC Museum
Conference room 1
Bookshop
- 3. MINE SHAFT AND WINCH ROOM 1
- 4. MINE SHAFT AND WINCH ROOM 2
Exhibition space
- 5. COAL STORAGE
- 6. ELECTRICAL SWITCHROOM
- 7. COOLING TOWER
- 8. FORGE AND MACHINE SHOP
PAS Museum
Library
Auditorium/conference room 2
Classrooms and laboratories
- 9. WAREHOUSE
Sotacarbo research center
Conference room 3
- 10. BUILDING WAREHOUSE
Museum educational facilities
- 11. STORAGE ROOM FOR LUBRICANTS
Anthropology museum active storage
- 12. WAREHOUSE
- 13. WAREHOUSE
- 14. GARAGE, OFFICES, INFIRMARY
CICC offices
Geo-mining park offices
Restaurant
Gift shop
- 15. OFFICES
Cultural associations
- 16. BICYCLE STORAGE
Artisans ateliers
- 17. MAIN OFFICES
Office of the City Cultural Commissioner

1937



1960-2000

